



Scientific Microwave

AN ISO 9001-2008 CERTIFIED COMPANY

Manufacturers of: Microwave Passive Components
Instruments & custom made Components etc.

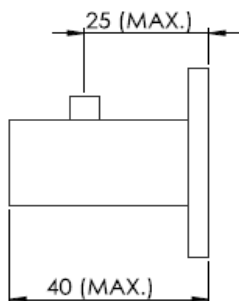
GST NO – 09AXAPS2587H1Z2

DATA SHEET

DESCRIPTION – WAVEGUIDE TO COAX ADAPTER

PART NO – SM018W75SMA40

REF BEL PART NO – 455042080105



ELECTRICAL SPECIFICATION –

- 1 FREQUENCY RANGE – 10 to 15 GHz
- 2 VSWR – 1.1 (Max.)
- 3 CONNECTOR – SMA (F)

MECHANICAL SPECIFICATION –

- 1 WAVEGUIDE SIZE – WR75
- 2 MATERIAL – ALUMINIUM
- 3 FINISH – PAINTED

ADDRESS: - PLOT NO 31, LANE NO-4, RAJENDER NAGAR INDL AREA MOHAN NAGAR GHAZIABAD – 201007 U.P.

E-mail: - info@smwave.com, scientificmicrowaves@gmail.com

WEB SITE: - ww.smwave.com