



Scientific Microwave

AN ISO 9001-2008 CERTIFIED COMPANY

Manufacturers of: Microwave Passive Components
Instruments & custom made Components etc.

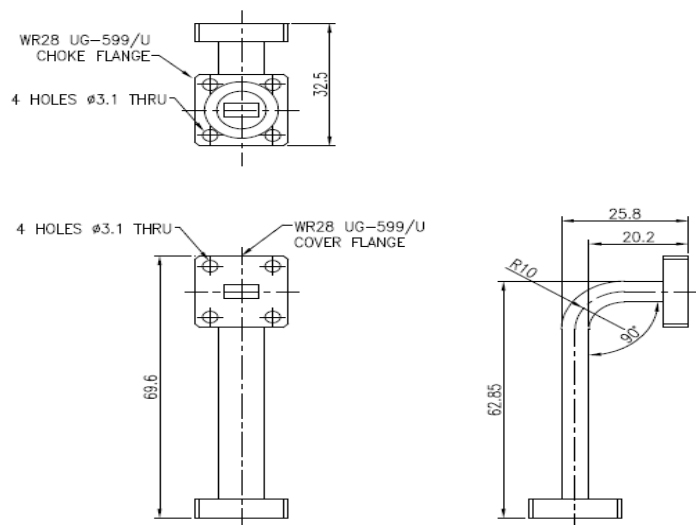
GST NO – 09AXAPS2587H1Z2

DATA SHEET

DESCRIPTION – WG-DUP TOP (KA BAND ANT – ATULYA)

PART NO – SM018W28EB2670

REF BEL PART NO – 4550 150 707 46



ELECTRICAL SPECIFICATION –

1. FREQUENCY RANGE: 26.4 to 40 GHz
2. VSWR: 1.15 (Max.)
3. INSERTION LOSS: 0.2dB (Max.)
4. TEST PRESSURE: 2.7 bar

MECHANICAL SPECIFICATION –

1. WAVEGUIDE SIZE: WR28
2. MATERIAL : BRCOPPER
3. FINISH: CORROSION TREATMENT (PS 252)
4. WAVEGUIDE COLOUR: PAINTED BLACK SEMI GLOSS
(OUTER SIDE)

NOTE: - 4 – 40 UNC SCREW L= 14mm WITH SPRING WASHER, QTY – 08 NOS & 01 No O-RING FOR CHOKE FLANGE WILL BE PROVIDED ALONG WITH EACH WAVEGUIDE.

ADDRESS: - PLOT NO 31, LANE NO-4, RAJENDER NAGAR INDL AREA MOHAN NAGAR GHAZIABAD – 201007 U.P.

E-mail: - info@smwave.com, scientificmicrowaves@gmail.com

WEB SITE: - www.smwave.com