



**Scientific Microwave**

AN ISO 9001-2008 CERTIFIED COMPANY

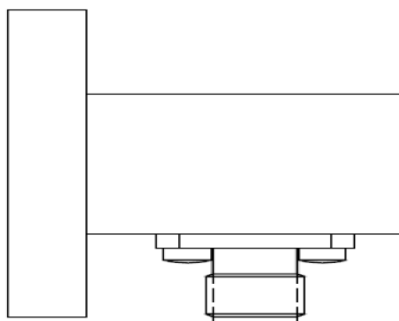
Manufacturers of: Microwave Passive Components  
Instruments & custom made Components etc.

GST NO – 09AXAPS2587H1Z2

## **DATA SHEET**

**DESCRIPTION – WAVEGUIDE ADAPTER TYPE SMA (F)**

**PART NO – SM018KUSMA – F25**



### **ELECTRICAL SPECIFICATION –**

1. FREQUENCY RANGE – 10 to 15 GHz
2. VSWR – 1.3 (Max.)
3. IMPEDANCE – 50Ohm
4. CONNECTOR – SMA (F)

### **MECHANICAL SPECIFICATION –**

1. WAVEGUIDE SIZE – WR75
2. MATERIAL – BRASS/COPPER
3. FLANGE – UBR 120
4. PRESSURE – 10Psi
5. FINISH – CORROSION TREATMENT
6. OUTSIDE FINISH – PAINT

ADDRESS: - PLOT NO 31, LANE NO-4, RAJENDER NAGAR INDL AREA MOHAN NAGAR GHAZIABAD – 201007 U.P.

E-mail: - [info@smwave.com](mailto:info@smwave.com), [scientificmicrowaves@gmail.com](mailto:scientificmicrowaves@gmail.com)

**WEB SITE: - [www.smwave.com](http://www.smwave.com)**