



Scientific Microwave

AN ISO 9001-2008 CERTIFIED COMPANY

Manufacturers of: Microwave Passive Components
Instruments & custom made Components etc.

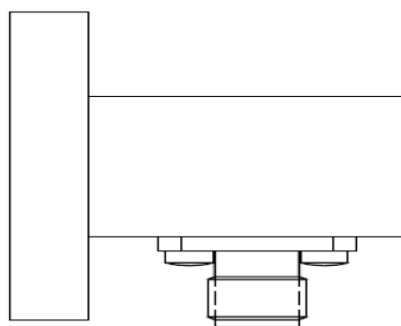
GST NO – 09AXAPS2587H1Z2

DATA SHEET

DESCRIPTION – WAVEGUIDE ADAPTER TYPE N (M)

PART NO – SM018KUN –MF38

REF BEL PART NO – 455044020202



ELECTRICAL SPECIFICATION –

1. FREQUENCY RANGE – 10 to 15 GHz
2. VSWR – 1.3 (Max.)
3. IMPEDANCE – 50Ohm
4. CONNECTOR – N TYPE (M)

MECHANICAL SPECIFICATION –

1. WAVEGUIDE SIZE – WR75
2. MATERIAL – BRASS/COPPER
3. FLANGE 1 – UBR 120
4. PRESSURE – 10Psi
5. FINISH – CORROSION TREATMENT

ADDRESS: - PLOT NO 31, LANE NO-4, RAJENDER NAGAR INDL AREA MOHAN NAGAR GHAZIABAD – 201007 U.P.

E-mail: - info@smwave.com, scientificmicrowaves@gmail.com

WEB SITE: - www.smwave.com