



Scientific Microwave

AN ISO 9001-2008 CERTIFIED COMPANY

Manufacturers of: Microwave Passive Components
Instruments & custom made Components etc.

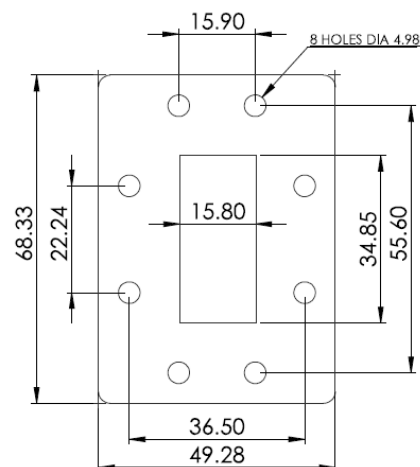
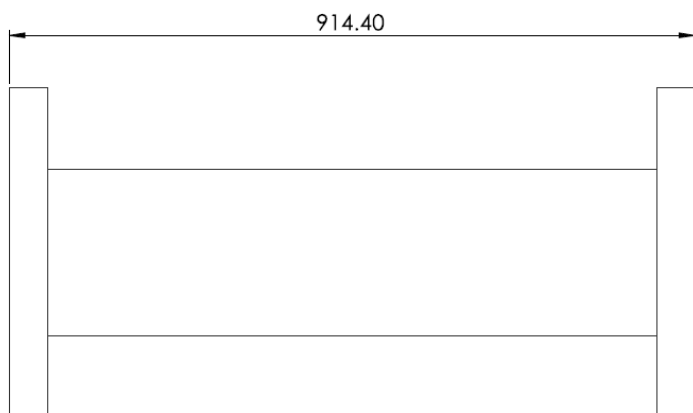
GST NO – 09AXAPS2587H1Z2

DATA SHEET

DESCRIPTION – FLEX – TWIST WAVEGUIDE

PART NO – SM018CFT915

REF BEL PART NO – 455041970301



ELECTRICAL SPECIFICATION –

1. FREQUENCY RANGE : 5.85 – 6.425 GHz
2. VSWR : 1.12 (Max.)
3. ATTENUATION : ≤ 0.3

MECHANICAL SPECIFICATION –

1. WAVEGUIDE SIZE : WR137 (FLEXIBLE TWISTABLE)
2. FLANGES : CPR 137 F
3. TWIST (STATIC) : ≥ 213
4. E – PLANE BEND RADIUS : ≤ 102
5. H – PLANE BEND RADIUS : ≤ 213
6. BASE MATERIAL : SILVER PLATED BRASS

ADDRESS: - PLOT NO 31, LANE NO-4, RAJENDER NAGAR INDL AREA MOHAN NAGAR GHAZIABAD – 201007 U.P.

E-mail: - info@smwave.com, scientificmicrowaves@gmail.com

WEB SITE: - www.smwave.com