

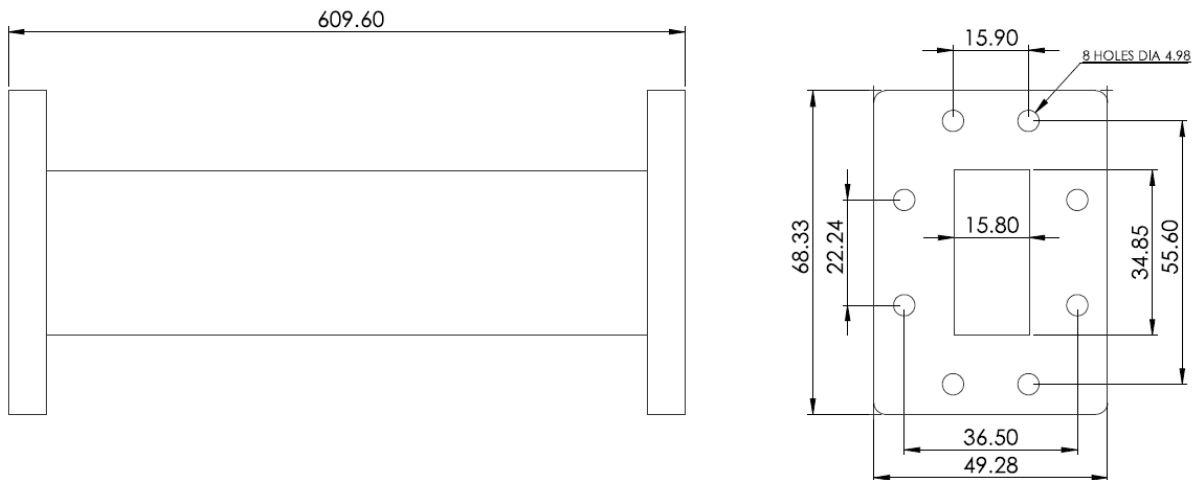


## DATA SHEET

**DESCRIPTION – FLEX – TWIST WAVEGUIDE**

**PART NO – SM018CFT610**

**REF BEL PART NO – 455041970204**



### ELECTRICAL SPECIFICATION –

1. FREQUENCY RANGE : 5.85 – 6.425 GHz
2. VSWR : 1.12 (Max.)
3. ATTENUATION :  $\leq 0.3$

### MECHANICAL SPECIFICATION –

1. WAVEGUIDE SIZE : WR137 (FLEXIBLE TWISTABLE)
2. FLANGES : CPR 137 F
3. TWIST (STATIC) :  $\geq 213$
4. E – PLANE BEND RADIUS :  $\leq 102$
5. H – PLANE BEND RADIUS :  $\leq 213$
6. BASE MATERIAL : SILVER PLATED BRASS