



Scientific Microwave

AN ISO 9001-2008 CERTIFIED COMPANY

Manufacturers of: Microwave Passive Components
Instruments & custom made Components etc.

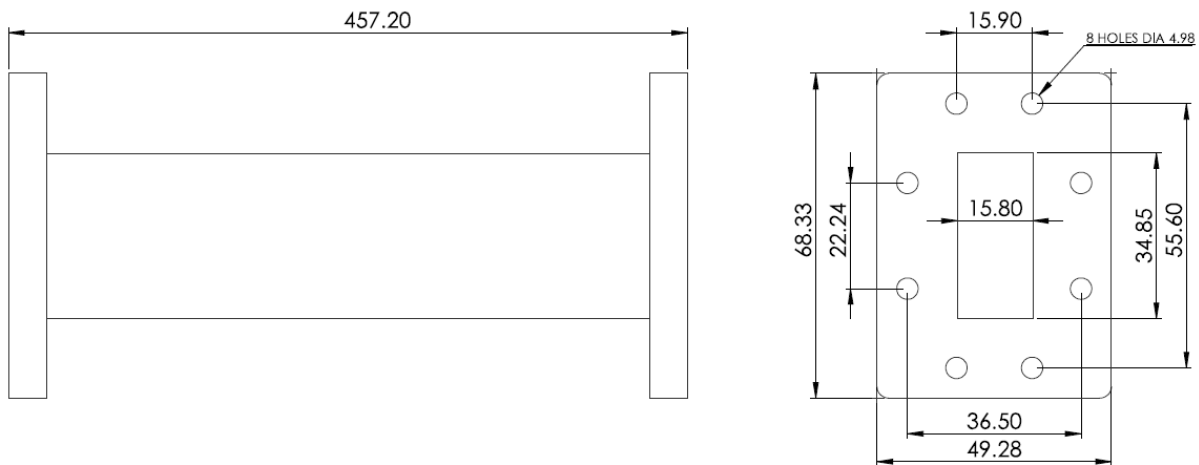
GST NO – 09AXAPS2587H1Z2

DATA SHEET

DESCRIPTION – FLEX – TWIST WAVEGUIDE

PART NO – SM018CFT457

REF BEL PART NO – 455041970107



ELECTRICAL SPECIFICATION –

- | | |
|--------------------|--------------------|
| 1. FREQUENCY RANGE | : 5.85 – 6.425 GHz |
| 2. VSWR | : 1.12 (Max.) |
| 3. ATTENUATION | : ≤ 0.3 |

MECHANICAL SPECIFICATION –

- | | |
|--------------------------|------------------------------|
| 1. WAVEGUIDE SIZE | : WR137 (FLEXIBLE TWISTABLE) |
| 2. FLANGES | : CPR 137 F |
| 3. TWIST (STATIC) | : ≥ 213 |
| 4. E – PLANE BEND RADIUS | : ≤ 102 |
| 5. H – PLANE BEND RADIUS | : ≤ 213 |
| 6. BASE MATERIAL | : SILVER PLATED BRASS |

ADDRESS: - PLOT NO 31, LANE NO-4, RAJENDER NAGAR INDL AREA MOHAN NAGAR GHAZIABAD – 201007 U.P.

E-mail: - info@smwave.com, scientificmicrowaves@gmail.com

WEB SITE: - www.smwave.com